

**WALEMA AVE
November 1, 2024**

**between
to**

**CORDOVA BAY RD AND LOCHSIDE DR
November 7, 2024**



The data presented here is for information purposes only and should not be considered authoritative for construction, geotechnical, engineering, navigational, legal, or other site-specific uses. Please note that small datasets may skew the calculation of the hourly 85th percentile speed. The information shared is owned by the Transportation Division of the Engineering Department at the District of Saanich. Accuracy is not guaranteed.

This document contains:

Overview

Vehicle Volume Summary

Vehicle Speed Summary

Vehicle Classification Summary

Overview

WALEMA AVE
November 1, 2024

between
to

CORDOVA BAY RD AND LOCHSIDE DR
November 7, 2024



Location Map

Metric	EB	WB	Combined
Average Traffic Volume (weekdays)	371	302	673
Average Speed (km/h)	34	34	34

Weather Information	Value
Minimum Temperature	6 °C
Maximum Temperature	12 °C
Total Precipitation	13 mm



Vehicle Volume Summary



Start Date: 11/1/2024
Start Time: 12:00 AM
Station ID: R1179-01

Location: WALEMA AVE Between CORDOVA BAY RD AND LOCHSIDE DR

DATE:	November 4, 2024		November 5, 2024		November 6, 2024		November 7, 2024		November 8, 2024					
	MON		TUE		WED		THURS		FRI		WK AVG		WK AVG	HOURLY
Time:	EB	WB	EB	WB	EB	WB	EB	WB	EB	WB	EB	WB	CH 1+2	%
12-1 AM	0	0	0	0	0	0	0	0	1	0	0	0	0	0.0%
1-2 AM	0	0	0	0	1	0	0	0	1	0	0	0	0	0.1%
2-3 AM	1	1	1	0	1	1	1	0	0	1	1	1	1	0.2%
3-4 AM	0	0	0	0	0	0	1	1	0	1	0	0	1	0.1%
4-5 AM	0	1	1	1	1	1	1	0	2	1	1	1	2	0.3%
5-6 AM	4	2	8	4	9	4	6	2	4	3	6	3	9	1.4%
6-7 AM	23	6	27	12	24	12	29	14	26	6	26	10	36	5.3%
7-8 AM	69	51	61	30	75	47	62	46	69	47	67	44	111	16.6%
8-9 AM	22	11	29	24	22	16	17	22	22	16	22	18	40	6.0%
9-10 AM	9	13	18	14	29	15	19	8	25	17	20	13	33	5.0%
10-11 AM	13	17	23	28	27	7	23	18	22	17	22	17	39	5.8%
11-12 PM	19	19	23	21	25	24	17	8	15	18	20	18	38	5.6%
12-1 PM	27	17	22	14	14	23	24	15	29	17	23	17	40	6.0%
1-2 PM	52	31	43	40	60	37	39	36	45	41	48	37	85	12.6%
2-3 PM	38	36	32	36	38	40	33	45	36	27	35	37	72	10.7%
3-4 PM	33	28	30	35	36	36	35	27	29	27	33	31	63	9.4%
4-5 PM	20	25	21	30	23	19	18	26	16	14	20	23	42	6.3%
5-6 PM	5	15	13	12	12	11	9	9	15	10	11	11	22	3.3%
6-7 PM	2	7	10	9	4	4	5	11	5	5	5	7	12	1.8%
7-8 PM	4	2	6	3	4	6	7	6	3	5	5	4	9	1.4%
8-9 PM	1	2	3	6	1	2	5	3	6	3	3	3	6	1.0%
9-10 PM	2	3	3	6	1	0	0	2	1	6	1	3	5	0.7%
10-11 PM	0	3	0	2	2	0	0	3	2	2	1	2	3	0.4%
11-12 AM	1	0	1	0	1	0	0	0	1	0	1	0	1	0.1%
LANES	345	290	375	327	410	305	351	302	375	284	371	302	673	100.0%
TOTAL	635		702		715		653		659		673			
	MON		TUE		WED		THURS		FRI		WK AVG			
<div><div>PEAK HOUR</div><div>MAX. 7 - 9 am PEAK</div><div>111 ➡</div><div>16.6%</div><div>between</div><div>7-8 AM</div></div>							<div><div>TOTAL VEHICLES-PEAK PERIODS</div><div>294 ➡</div><div>6 HR TOTAL</div><div>216 ➡</div><div>4 HR TOTAL</div></div>				<div><div>2 HOUR PEAK INTERVALS</div><div>2 HR AM (7 - 9 AM)</div><div>VEH / HR</div><div>VEH / 2HR</div><div>2 HR %</div><div>7-8 AM</div><div>111</div><div>152</div><div>22.5%</div><div>8-9 AM</div><div>40</div><div></div><div></div></div>			
<div><div>MAX. 11 am - 1 pm PEAK</div><div>40 ➡</div><div>6.0%</div><div>between</div><div>12-1 PM</div></div>							<div><div>24 HOUR FACTORS</div><div>2.29 ➡</div><div>6-24 HR FACT.</div><div>3.11 ➡</div><div>4-24 HR FACT.</div></div>				<div><div>2 HR NOON (11 - 1 PM)</div><div>VEH / HR</div><div>VEH / 2HR</div><div>2 HR %</div><div>11-12 PM</div><div>38</div><div>78</div><div>11.6%</div><div>12-1 PM</div><div>40</div><div></div><div></div></div>			
<div><div>MAX. 11 am - 3 pm PEAK</div><div>85 ➡</div><div>12.6%</div><div>between</div><div>1-2 PM</div></div>											<div><div>2 HR PM (4 - 6 PM)</div><div>VEH / HR</div><div>VEH / 2HR</div><div>2 HR %</div><div>4-5 PM</div><div>42</div><div>65</div><div>9.6%</div><div>5-6 PM</div><div>22</div><div></div><div></div></div>			
<div><div>MAX. 4 - 6 pm PEAK</div><div>42 ➡</div><div>6.3%</div><div>between</div><div>4-5 PM</div></div>														
<div><div>MAX. 3 - 6 pm PEAK</div><div>63 ➡</div><div>9.4%</div><div>between</div><div>3-4 PM</div></div>														

Vehicle Speed Summary

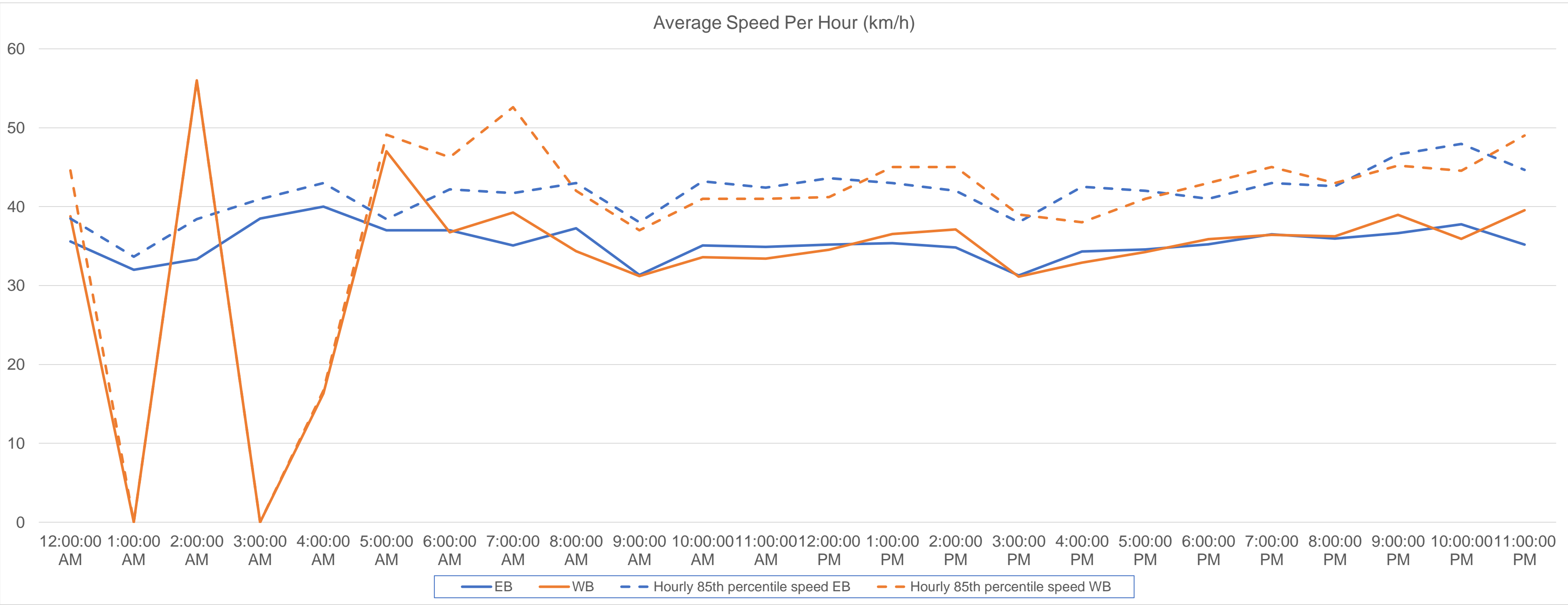


Station ID: R1179-01
Location: WALEMA AVE between CORDOVA BAY RD AND LOCHSIDE DR
Dates: 11/1/2024 to 11/7/2024

Bin Number	1	2	3	4	5	6	7	8	9	10	11	12	13	14
Bin Speeds	1-20	21-25	26-30	31-35	36-40	41-45	46-50	51-55	56-60	61-65	66-70	71-80	81-90	91-9999
Count Total	98	332	842	1092	850	501	198	57	11	2	2	0	0	1
Percent Total	2%	8%	21%	27%	21%	13%	5%	1%	0%	0%	0%	0%	0%	0%

Movements	Above 30 km/h	Above 40 km/h	Above 50 km/h
EB	68%	19%	2%
WB	68%	19%	2%
Combined	68%	19%	2%

Movements	Average Speed	85th Percentile Speed	95th Percentile Speed
EB	34 km/h	42 km/h	46 km/h
WB	34 km/h	42 km/h	47 km/h
Combined	34 km/h	42 km/h	47 km/h



Vehicle Class Summary



Station ID R1179-01
Location: WALEMA AVE between CORDOVA BAY RD AND LOCHSIDE DR
Dates: 11/1/2024 to 11/7/2024

Classification	Short	Medium	Long
Length	Less than 2m	2m to 4m	Great than 6m

Movement	Classification			Total
	Short	Medium	Long	
EB	13	2165	49	2227
WB	11	1739	55	1805
Total	24	3904	104	4032
Percentage of Total	0.60%	96.83%	2.58%	100.00%